

Can You Hear the Music

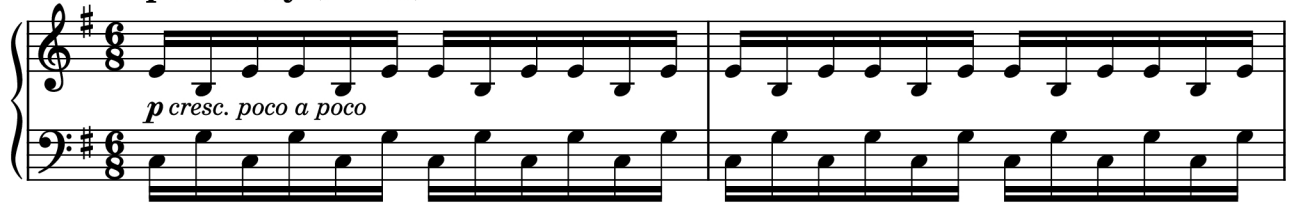
"Oppenheimer"

Johannes Johansson
Piano Arrangement

PDF • MP4: truongca.com/pdf/26739.pdf

Music by
Ludwig Göransson

Expressively (♩ = 68)



2

11




13



15



17



19



21 $\text{♩} = 30$ *poco a poco accel.*

31



33

$\text{♩} = 80$

cresc.



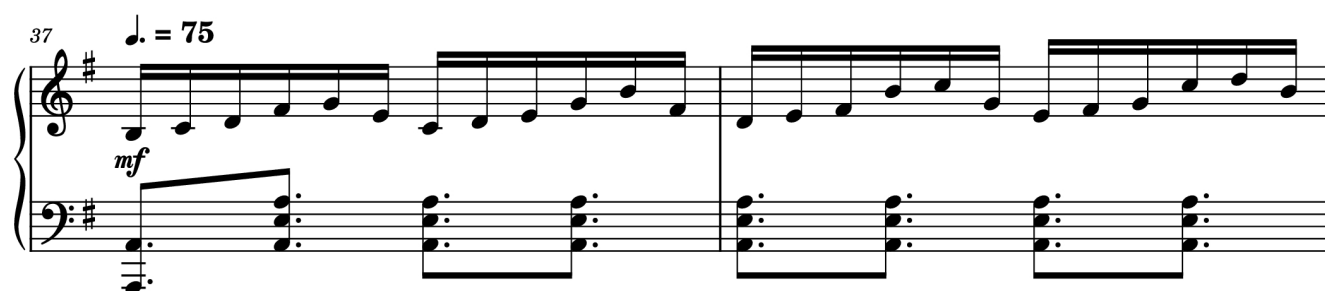
35



37

$\text{♩} = 75$

mf



39



41 $\text{♩} = 85$

cresc.

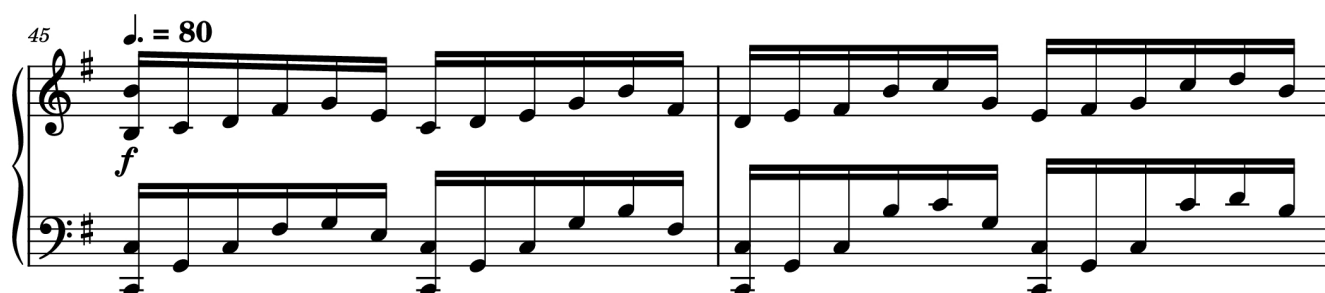


43



45 $\text{♩} = 80$

f



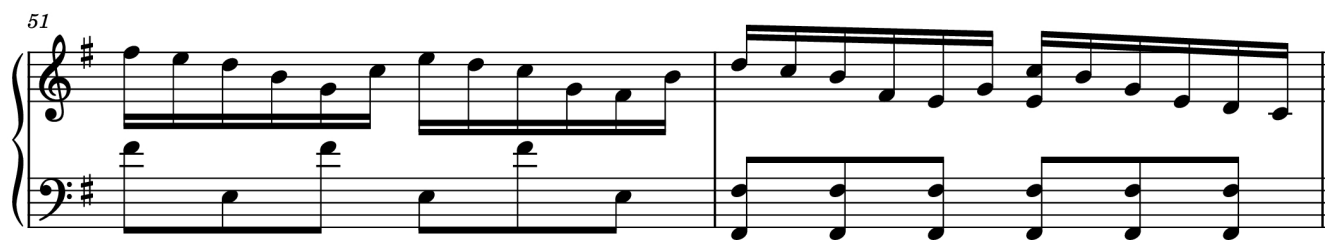
47



49 $\text{♩} = 90$



51



53 $\text{♩} = 85$



55



57 $\text{♩} = 95$
cresc.



59



61 $\text{♩} = 90$

ff

63

ff

65 $\text{♩} = 100$

ff

67

ff

69 $\text{♩} = 95$

sffz *p*

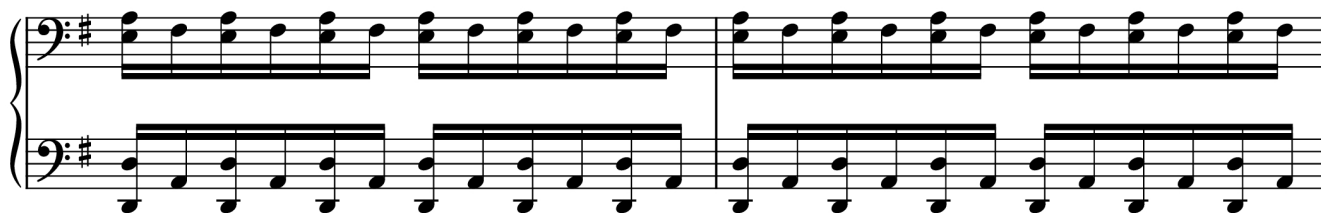
71



73



75



77



79



81

Measures 81-82 of a piano piece. The music is in G major (one sharp) and 4/4 time. The right hand features a steady eighth-note melody, while the left hand plays a rhythmic accompaniment of eighth notes. The key signature is G major.

83

Measures 83-84 of a piano piece. The music continues in G major and 4/4 time. The right hand maintains the eighth-note melody, and the left hand continues the eighth-note accompaniment. The key signature is G major.

85

Measures 85-86 of a piano piece. The music continues in G major and 4/4 time. The right hand maintains the eighth-note melody, and the left hand continues the eighth-note accompaniment. The key signature is G major.

87

Measures 87-88 of a piano piece. The music continues in G major and 4/4 time. The right hand maintains the eighth-note melody, and the left hand continues the eighth-note accompaniment. The key signature is G major.

89

Measures 89-90 of a piano piece. The music continues in G major and 4/4 time. The right hand maintains the eighth-note melody, and the left hand continues the eighth-note accompaniment. The key signature is G major.

91

93

cresc.

95

mf

97

99

rit.

f

$\text{♩} = 70$

6

9

101

9 9 9 9

103

9 6 9

105

9 9 9 9

107

6 9

109

9 9 9 9

12

111

Measures 111-112. Measure 111 features a treble staff with a sequence of eighth notes and a bass staff with a sequence of eighth notes, both marked with a '9'. Measure 112 features a treble staff with a sequence of eighth notes and a bass staff with a sequence of eighth notes, both marked with a '6' and a '9'.

113

Measures 113-114. Measure 113 features a treble staff with a sequence of eighth notes and a bass staff with a sequence of eighth notes, both marked with a '9'. Measure 114 features a treble staff with a sequence of eighth notes and a bass staff with a sequence of eighth notes, both marked with a '9'.

115

Measures 115-116. Measure 115 features a treble staff with a sequence of eighth notes and a bass staff with a sequence of eighth notes, both marked with a '9'. Measure 116 features a treble staff with a sequence of eighth notes and a bass staff with a sequence of eighth notes, both marked with a '6' and a '9'.

117

Measures 117-118. Measure 117 features a treble staff with a sequence of eighth notes and a bass staff with a sequence of eighth notes, both marked with a '9'. Measure 118 features a treble staff with a sequence of eighth notes and a bass staff with a sequence of eighth notes, both marked with a '6' and a '9'.

119

Measures 119-120. Measure 119 features a treble staff with a sequence of eighth notes and a bass staff with a sequence of eighth notes, both marked with a '9'. Measure 120 features a treble staff with a sequence of eighth notes and a bass staff with a sequence of eighth notes, both marked with a '6' and a '9'.

121

Measures 121-122. Treble clef: Measure 121 has a 9-measure rest, followed by a 6-measure rest in measure 122. Bass clef: Measure 121 has a 9-measure rest, followed by a 9-measure rest in measure 122. The key signature is one sharp (F#).

123

Measures 123-124. Treble clef: Measure 123 has a 9-measure rest, followed by a 9-measure rest in measure 124. Bass clef: Measure 123 has a 9-measure rest, followed by a 9-measure rest in measure 124. The key signature is one sharp (F#). A *ff* (fortissimo) dynamic marking is present in measure 124.

125

Measures 125-126. Treble clef: Measure 125 has a 9-measure rest, followed by a 9-measure rest in measure 126. Bass clef: Measure 125 has a 9-measure rest, followed by a 9-measure rest in measure 126. The key signature is one sharp (F#).

127

Measures 127-128. Treble clef: Measure 127 has a 9-measure rest, followed by a 9-measure rest in measure 128. Bass clef: Measure 127 has a 9-measure rest, followed by a 9-measure rest in measure 128. The key signature is one sharp (F#).

129

Measures 129-130. Treble clef: Measure 129 has a 9-measure rest, followed by a 9-measure rest in measure 130. Bass clef: Measure 129 has a 9-measure rest, followed by a 9-measure rest in measure 130. The key signature is one sharp (F#).

14

131

Measures 131-132. Treble and bass staves. Treble staff has chords and eighth notes. Bass staff has eighth notes.

133

$\text{♩} = 80$

sfz *p*

Measures 133-135. Treble and bass staves. Measure 133 has a key signature change to D major. Measures 134-135 have a tempo marking of quarter note = 80 and dynamics *sfz* and *p*.

136

8va

Measures 136-139. Treble and bass staves. Measure 139 has an 8va marking.

140

$\text{♩} = 30$ poco a poco accel.

Measures 140-141. Treble and bass staves. Measure 140 has a tempo marking of quarter note = 30 and poco a poco accel. Measure 141 has a long note in the bass staff.

142

Measures 142-143. Treble and bass staves. Measure 142 has eighth notes in the treble staff. Measure 143 has eighth notes in the treble staff.

144

8va

146

8va

rit. e dim

pp

Can You Hear the Music Piano, file .PDF

* Credit

- Name: Can You Hear the Music Piano.
- Author/Composer: Ludwig Goransson
- Link: <https://pianosnap.com/sheet/26739-can-you-hear-the-music-piano>
- Email: info@pianosnap.com
- Chanel Piano Tutorial: <https://Youtube.com/@PianoTutorialSheetMusic>
- Chanel Beginner Piano Sheet PDF: <https://Youtube.com/@PianoPDF>
- My personal channel: <https://www.youtube.com/@SnapPiano>
- Support My Patreon channel: <https://www.patreon.com/PianoSnap>
- Ask a sheet: <https://pianosnap.com/ask.php>

* Copyright Disclaimers - No Rights Reserved

Can You Hear the Music Piano (Ludwig Goransson) And all of sheets music and PDF files were posted here to support you to practice singing perfectly. Sheets with notes and chords are for reference only, for non-commercial purposes only, not involved with earning money by buying and selling. Copyright is belong to song writer/author and copyright owner. Our project do not own any copyrighted content.