

July Morning

Arranged for Jazz Trio
Philip Copeman



Sheet music for "July Morning" arranged for Jazz Trio (Piano, Acoustic Bass, Drumset).

The score is in 4/4 time and consists of three systems of staves.

System 1 (Measures 1-3):

- Piano:** Treble clef, 4/4 time. Chords: F/C (measure 1), C (measure 2), F/C (measure 3). Dynamics: *pp* (pianissimo) in measure 1. Accents (^) are placed over the second and fourth notes in measures 1, 2, and 3.
- Acoustic Bass:** Bass clef, 4/4 time. Rests in measures 1, 2, and 3.
- Drumset:** Bass clef, 4/4 time. Rests in measures 1, 2, and 3.

System 2 (Measures 4-7):

- Pno.:** Treble clef, 4/4 time. Chords: C (measure 4), F/C (measure 5), C (measure 6), F/C (measure 7). Dynamics: *p* (piano) in measure 5. Accents (^) are placed over the second and fourth notes in measures 4, 5, and 6.
- Bass:** Bass clef, 4/4 time. Rests in measures 4, 5, 6, and 7.
- D. Set:** Bass clef, 4/4 time. Rests in measures 4, 5, 6, and 7.

System 3 (Measures 8-10):

- Pno.:** Treble clef, 4/4 time. Chords: C (measure 8), F/C (measure 9), C (measure 10). Measure 10 contains a half note G4.
- Bass:** Bass clef, 4/4 time. Chords: F/C (measure 9), C (measure 10). Measure 10 contains a half note G2.
- D. Set:** Bass clef, 4/4 time. Measure 8 is a rest. Measures 9 and 10 feature a *f* (forte) "riff 1" pattern, with the instruction "no drums" written above the staff.

A

11

Pno.

Bass

D. Set

f

F/C C F/C

14

Pno.

Bass

D. Set

C F/C C

17

Pno.

Bass

D. Set

F/C F/C

20 **C**

Pno.

Bass

D. Set

Measures 20-21. Piano part: Treble clef, C major triads. Bass part: Bass clef, walking eighth-note line. Drum set: Snare and bass drum pattern.

22 **F/C** **B♭** **C**

Pno.

Bass

D. Set

Measures 22-24. Piano part: Treble clef, chords F/C, Bb, and C. Bass part: Bass clef, walking eighth-note line. Drum set: Snare and bass drum pattern.

25 **Cm** **Fm** **B♭** **Cm**

Pno.

Bass

D. Set

p

riff 2

Measures 25-28. Piano part: Treble clef, chords Cm, Fm, Bb, and Cm. Bass part: Bass clef, walking eighth-note line. Drum set: Snare and bass drum pattern. Dynamics: *p* (piano).

B

29

B. V.

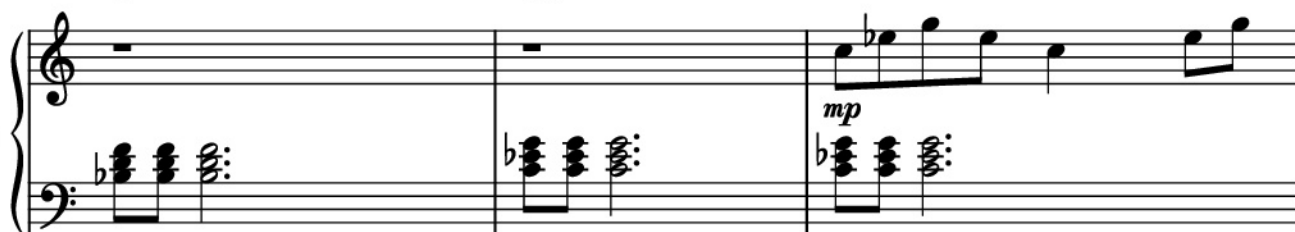
35

B. V.

B \flat

Cm

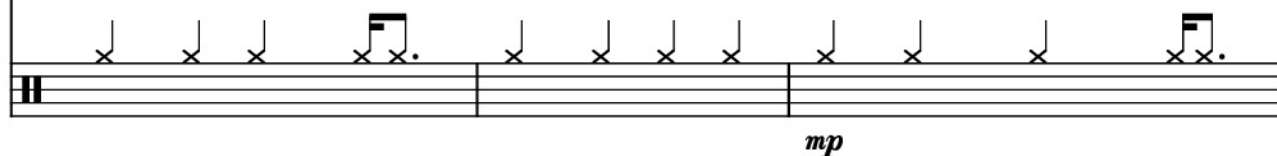
Pno.



Bass



D. Set



38

B. V.



Fm

B \flat

Cm

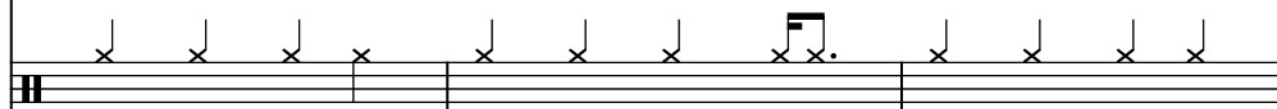
Pno.



Bass



D. Set



41

B. V.

With the storm and the night behind me And a road of my

Pno.

Fm Bb

Bass

With the storm and night behind me And a road of my

D. Set

44

B. V.

own With the day came the res so lu ti on

Pno.

Cm Eb Gm

Bass

Cm own Eb With the day came the Gm Resolution

D. Set

riff 3

47

B. V.

I'll be look ing for you,

Pno.

Bass

D. Set

49

B. V.

la la la la- a, la la la la- a,

Pno.

Bass

D. Set

51

B. V.

la, la, la

a -

Pno.

A^b B^b C_m

Bass

A^b B^b la la C_m

D. Set

riff 2

p

D

54

B. V.

p

was look ing for love in the strang est pla

Pno.

F_m B^b C_m

p

Bass

F_m B^b C_m C_m was looking for love in the strangest pla

p

D. Set

58

B. V.

ces was n't a stone that I left un turned

Fm Bb Cm

Pno.

Bass

ces Fm wasn't a stone that I left un turned

D. Set

61

B. V.

have tried more than a thou sand fac es not one was a ware of the fire that

Fm Bb

Pno.

Bass

Fm have tried more than a thou sand fac es Bb not one was aware of the fire that

D. Set

E

64

B. V. *burned* *f* In my heart, In my mind

Pno. *Cm* *E^b* *Gm* *f*

Bass *Cm* *burned* *E^b* In my heart *Gm* In my mind *f*

D. Set *fill* *riff 4* *f*

67

B. V. in my soul

Pno. *A^b* *B^b* *Cm*

Bass *A^b* *B^b* in my soul *Cm*

D. Set

69

B. V.

76 *Cm*

Pno.

Bass

D. Set

(4)

78 *Fm*

Pno.

Bass

D. Set

Bb

80 *Cm*

Pno.

Bass

D. Set

(8)

82 *Fm* *Bb*

Pno.

Bass

D. Set

84 *Cm*

Pno.

Bass

D. Set

(12)

86 *Fm* *Bb*

Pno.

Bass

D. Set

G

88

B. V. *f* In my heart, in my mind

Pno. *f* Cm Eb Gm

Bass Cm Eb In my heart Gm In my mind *f*

D. Set 16X (16) riff 4 ^ ^

91

B. V. in my u l

Pno. Ab Bb Cm

Bass Ab Bb in my so Soul Cm

D. Set (4)

93

B. V. 
In my he ar t, in my mi n

Pno. 

Bass 
In my heart In my mind

D. Set 

95

B. V. 
in my soul la la la la- a,

Pno. 

Bass 
in my so ul la la la la-a

D. Set 

98

B. V. 
la la la la- a, la la

Pno. 

Bass 
la la la la-a la la

D. Set 

100

B. V.

la

la la la la- a,

Pno.

Cm Eb

f

Bass

la la la la-a

D. Set

fill riff 4

102

B. V.

la la la la- a, la la

Pno.

Gm Ab Bb

Bass

la la la la-a la la

D. Set

% %

104

B. V.

la a a la la la a a la la

Cm C

Pno.

Bass

Cm C

la a-a la a-a la la

D. Set

(4)

% %

106

B. V.

la- a- a, la la la- a- a

Pno.

Fm G

Bass

Fm la a-a G la a-a

D. Set

H % %

108

B. V.

la- a- a,

la- a- a,

la- a- a,

Pno.

Cm C Fm

Bass

Cm la a-a

la a-a

Fm la a-a

D. Set

(8)

%

%

%

111

B. V.

la

la la la- a- a

la la

Pno.

G Cm D

Bass

la G

Cm

la la

D la a-a

gliss.

la la

D. Set

riff 5

%

%

%

114

B. V.

la- a- a, la la la- a- a, la la

Pno.

Fm G Cm

Bass

Cm la a-a G la la la Cm la a-a

gliss.

D. Set

fill

116

B. V.

la- a- a, la- a- a, la- a- a,

Pno.

Cm D Fm G

Bass

Cm la a-a D la a-a gliss. Cm la a-a G gliss.

riff 5

riff 4

D. Set

H

119

B. V. *la a a,*

Pno. *Cm Cm Fm*

Bass *Cm la a-a Bass Solo Cm Fm*

p

mf

There I was on a Ju ly morn ing

riff 3

p

D. Set

123

Pno. *Bb Cm Cm*

Bass *Bb Cm*

I was looking for love, With the strength of a new day dawn

D. Set

126

Pno. *Fm Bb Cm*

Bass *Fm Bb Cm*

ing And the beauti ful sun

D. Set

129 Cm Fm Bb

Pno.

Bass

At the sound of the first bird sing ing I was leaving for

D. Set

132 Cm Cm Fm

Pno.

Bass

ho m e With the storm and the night behind me

D. Set

135 Bb Cm I Eb

Pno.

Bass

Ye a h And a road of my own f With the day came the

riff 4 mirror vocal line

D. Set

138 Gm Ab Bb Cm

Pno.

Bass

res o lu ti on I'd be looking for you,

D. Set

141 Eb Gm Ab Bb Cm

Pno.

Bass

la la la la-a, la la la a a la la la

D. Set

J
145 D Fm G

Pno.

Bass

gliss.

riff 6

D. Set

148 Cm D

Pno.

Bass

D. Set

fill

riff 6

gliss.

151 Fm G Cm

Pno.

Bass

D. Set

fill

153 D

Pno.

Bass

D. Set

dim.

riff 6

dim.

156

Pno.

Bass

D. Set

Fm G Cm

fill

158

Pno.

Bass

D. Set

D Fm G

riff 6

161

Pno.

Bass

D. Set

Cm

July Morning Piano, file .PDF

* Credit

- Name: July Morning Piano.
- Author/Composer: Uriah Heep
- Link: <https://truongca.com/nhac/26099-july-morning-piano>
- Email: info@truongca.com
- Youtube: [Youtube.com/@PianoTutorialSheetMusic](https://www.youtube.com/@PianoTutorialSheetMusic)
- Ask a sheet: <https://truongca.com/ask.php>

* Copyright Disclaimers - No Rights Reserved

July Morning Piano (Uriah Heep) And all of sheets music and PDF files were posted here to support you to practice singing perfectly. Sheets with notes and chords are for reference only, for non-commercial purposes only, not involved with earning money by buying and selling. Copyright is belong to song writer/author and copyright owner. Truongca.com do not own any copyrighted content.